



*The Rebel sporting the Murphy Amphibious Model Floats.*

T O W A R D   T H E   F L I G H T L I N E :

## With Murphy Floats

To enhance the utility of your Rebel or Elite and enable you the access to those hidden lakes in the back country, Murphy Aircraft has designed a series of all aluminum straight and amphibious float kits. Currently, Murphy Aircraft is manufacturing two weight category of floats, the 1500 and 1800 pound displacement. The 1500 series, straight and amphibious models are excellent for our light weight Rebel and can easily be fitted on many of the popular kitplanes in this weight range. The 1800 series were designed for the higher gross Rebel and Elite and are also adaptable to a number of popular kitplanes. Future plans include a 3300 pound displacement float for the four place Super Rebel.

Murphy floats, like our aircraft, require no jigs to assemble, just lay them out on a level working table and the self aligning

pilot holes will set you on the right path. They are constructed from 6061-T6 aluminum which has excellent corrosion resistant properties and is easy to work. When you open the crate, you will find you have everything to complete your floats (less tools). All Murphy floats feature twin water rudders, spreader bars and

connecting struts.

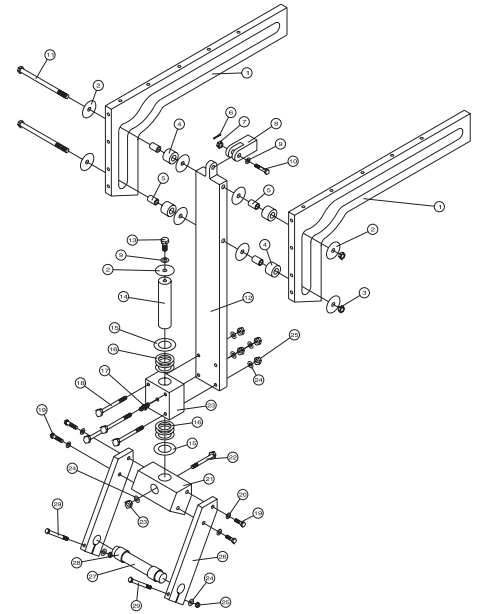
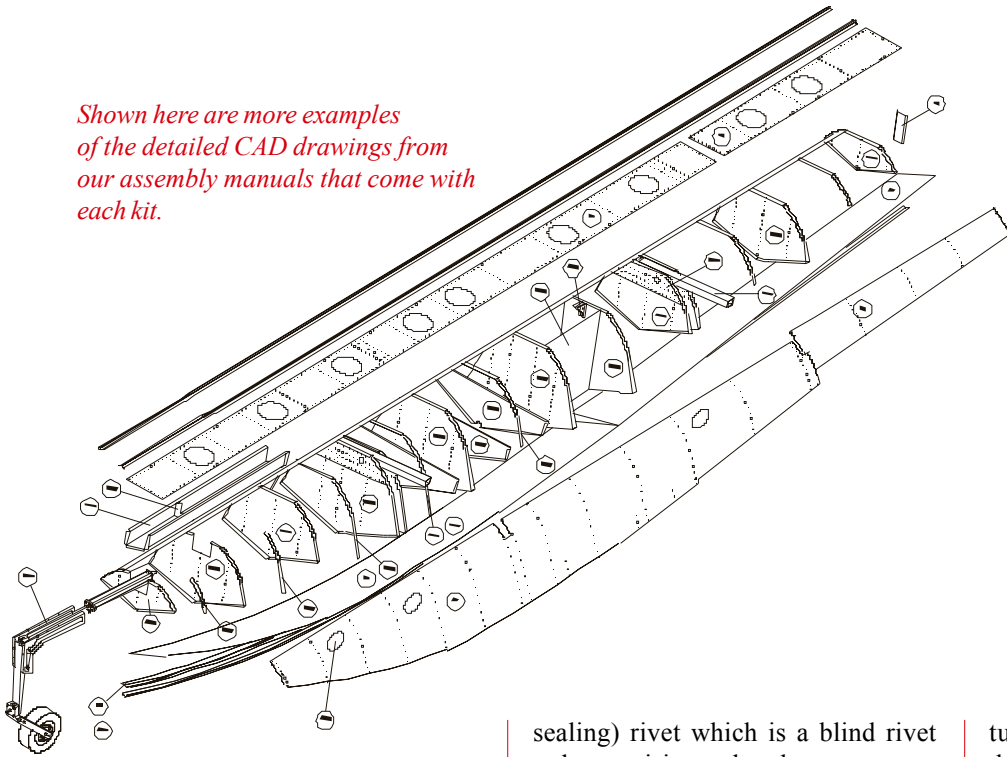
Each float is comprised of eight watertight compartments with easy access through 6" spin-on caps. Side and top deck plates are pre-punched providing for the location of the 11 main bulkheads, 7 false and 3 short putting you on the fast track for completion. Final forming of the bulkheads are



© Howard Levy

*George Wood's Rebel equipped with Murphy 1800 Amphibious Floats — serial number 224R*

Shown here are more examples of the detailed CAD drawings from our assembly manuals that come with each kit.



required but Murphy even supplies a metal shrinker/stretcher in each kit and a complete tool kit is also available. The floats are assembled using a “tank”(self

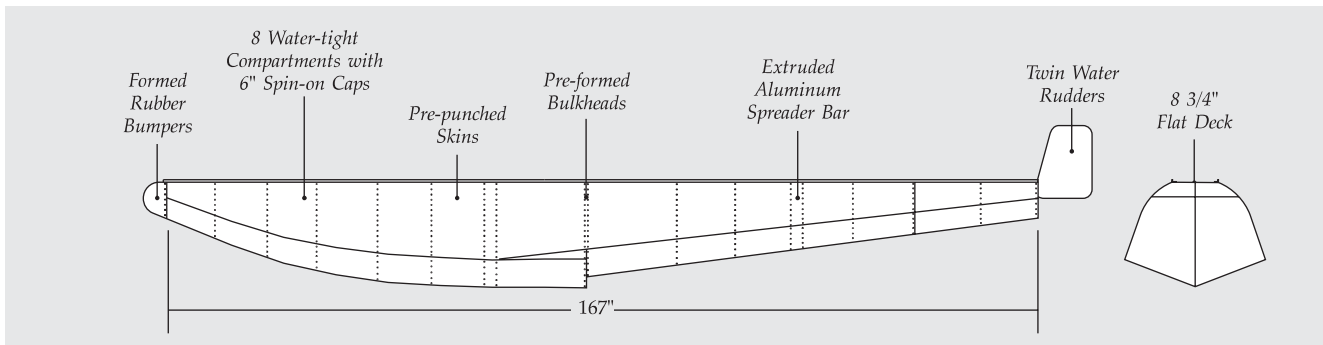
sealing) rivet which is a blind rivet only requiring a hand or pneumatic rivet gun. This allows you to work alone and probably will save you some expense by not missing with that bucking bar!

Amphibious floats offer the widest range of possibilities for

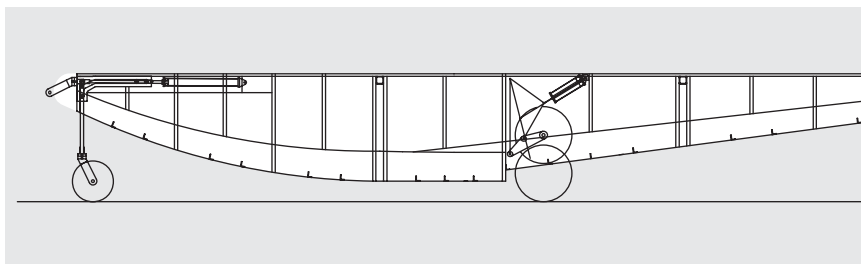
turning weekends into splash-down adventures. Wheels on the amphibious models are retracted by four independent hydraulic cylinders by using a simple hand pump located within easy reach to the pilot.

Both Murphy amphibious

**Murphy 1500 and 1800 Series Floats** (1500 illustrated here)



**Murphy 1500 and 1800 Series Amphibious Floats**





floats incorporate a Cleveland 5” main wheels and brakes with low profile tires and 8” free casting nose wheels. Steering is accomplished through differential braking allowing the floats to quickly pivot. Lowering the wheels requires approximately 18 - 20 strokes of the hand pump. The main gear is locked into position by the linkage simply

over centering and the nose gear cambers to the rear and is held in place by hydraulic pressure. Suspension is provided by compression washers on the main gear leg and by a semi-flexible front gear arm.

Instructions are well laid out in a step by step instruction manual with detailed exploded views. Assembly times will vary

for each individual and times will range from 250 - 500 hours depending on the size and type of float being assembled.

Talk to one of our friendly sales reps for more information on how you can convert your Rebel or other kitplane for float flying... it’s quick, easy and beats nearly everything out there for cost.

### Floats - Design Specifications

	1500 Series	1800 Series	1500 Amphibs	1800 Amphibs
<b>Displacement</b>	1500 lbs.	1800 lbs.	1450 lbs	1750 lbs.
<b>Deck Width</b>	8 3/4’	8 3/4’’	8 3/4’’	8 3/4’’
<b>Overall Length (Without Rudder)</b>	167’’	188’’	167’’	188’’
<b>Weight (Without Spreaders) per Float</b>	85 lbs.	88 lbs.	109 lbs.	112 lbs.
<b>Water Rudders</b>	2, Cable Actuated	2, Cable Actuated	2, Cable Actuated	2, Cable Actuated
<b>Float Stance (On Rebel)</b>	Approx. 95’’	Approx. 95’’	Approx. 95’’	Approx. 95’’
<b>Net Weight Increase (Rebel)</b>	Approx. 143 lbs.	Approx. 200 lbs.	Approx. 166 lbs.	Approx. 224 lbs.